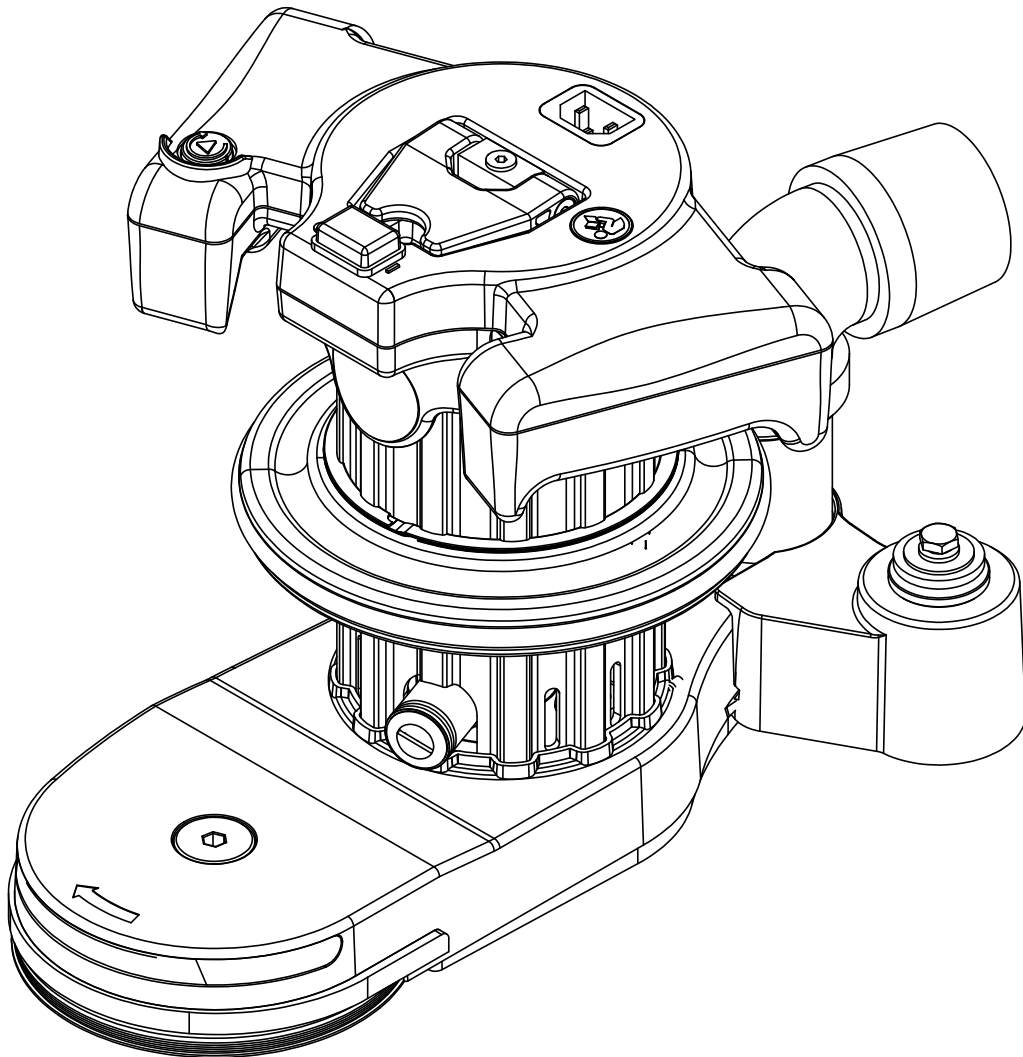




HT5 EDGER



OWNERS MANUAL & OPERATING INSTRUCTIONS



TABLE OF CONTENTS

Safety Precautions	2-5
Technical Specifications	5
Machine Components	6
Operator Responsibility	6
Grounding Instructions	7
Connection to Power Supply (230V).....	7
Extension Cords	7
Machine Setup	8
Preparing Remote Vacuum	8
Preparing the Machine	8
Operating the Machine	9
Adjustment Procedures.....	9
Leveling.....	9
Routine Maintenance.....	10
Maintenance.....	10
Troubleshooting	11
Parts Manual.....	12
Electrical Schematic.....	13
Base Assembly.....	14-15
Pad Driver & Pulley Assembly	16
Caster Assembly.....	17
Handle Assembly.....	18
Carbon Brush Assembly	19
Warranty	20

FOR YOUR SAFETY

DO NOT STORE OR USE GASOLINE OR OTHER FLAMMABLE VAPORS AND LIQUIDS IN THE VICINITY OF THIS OR ANY OTHER APPLIANCE.

WARNINGS

This Product Is Intended For Commercial Use Only!

In this Operation Manual you will find three statements that you must read and observe to ensure safe operation of this machine.

DANGER! indicates that the possibility of severe bodily injury or death can occur if DANGER! statements are ignored. Read and observe all DANGER! statements included in the Operation Manual and attached to the machine.

WARNING! indicates that the possibility of bodily injury to the operator and other people can occur if WARNING! statements are ignored. Read and observe all WARNING! statements included in the Operation Manual and attached to the machine.

CAUTION! indicates that the possibility of damage to the machine or other property can occur if CAUTION! statements are ignored. Read and observe all CAUTION! statements included in the Operation Manual and attached to the machine.

SAFETY PRECAUTIONS

Anyone operating the machine should read the following carefully and be informed of potentially dangerous operating conditions. Operators should be familiar with the location and use of all safety devices on the machine. DO NOT use the machine if it is not in proper operating condition, and report any damage or operation faults immediately.

DANGER! Sanding/finishing wood floors can create an explosive or combustible environment. Do not operate this machine around solvents, thinners, alcohol, fuels, floor finishes, wood dust or any other flammable materials. Cigarette lighters, pilot lights, electrical sparks and all other sources of ignition should be extinguished or avoided. Keep work area well ventilated.

DANGER! Dust generated from sanding wood floors can spontaneously ignite or explode. Promptly dispose of any sanding dust in a metal container clear of any combustibles. Do not dispose in a fire.

DANGER! Shock hazard. Do not use the machine if it has been rained on or sprayed with water.

DANGER! To avoid injury keep hands, feet, and loose clothing away from all moving parts on the machine. Disconnect the power cord before replacing the pad, changing the abrasive, or when servicing. Do not operate the machine unless all guards are in place. Never leave the machine unattended while connected to a power source.

DANGER! Failure to read the Owner's Manual prior to operating or attempting any service or maintenance procedure to your machine could result in injury to you or to other personnel; damage to the machine or to other property could occur as well. You must have training in the operation of this machine before using it. If you or your operator(s) cannot read English, have this manual explained fully before attempting to operate this machine.

DANGER! Risk of explosion. Floor sanding can result in an explosive mixture of fine dust and air. To reduce risk of explosion, use floor sanding machine only in well ventilated area.

DANGER! Operating a machine that is not completely or fully assembled could result in injury or property damage. DO NOT operate this machine until it is completely assembled. Inspect the machine carefully before operation.

DANGER! Electrocutation could occur if maintenance and repairs are performed on a unit that is not disconnected from the power source. Disconnect the power supply before attempting any maintenance or service. Always remove the electrical plug from the electrical outlet before changing the brush, pad or other attachment and before leaving the machine.

DANGER! Using a machine with a damaged power cord could result in an electrocution. DO NOT use the machine if the power cord is damaged. DO NOT use the electrical cord to move the machine.

WARNING! Injury can occur if protective clothing or equipment is not used while sanding. Always wear safety goggles, protective clothing, and dust mask while sanding.

WARNING! This sander is not to be used on pressure treated wood. Some pressure treated woods contain arsenic and sanding pressure treated wood produces hazardous dust. Inhaling hazardous dust from pressure treated wood can cause serious injury or death. Sanding pressure treated wood decks or uneven surfaces can damage the sander which is not covered under warranty or damage waiver.

WARNING! Modifications or alterations to this machine can lead to personal injury or damage to the machine. DO NOT make unauthorized modifications or alterations to this machine. HireTech assumes no liabilities for injury or damage resulting from an unauthorized modification or alteration to the machine. Any unauthorized modification or alteration to this machine voids all warranties.

WARNING! Electrical components of this machine can "short-out" if exposed to water or moisture. Keep the electrical components of the machine dry. Wipe the machine down after each use. For storage, keep the machine in a dry building.

WARNING! Always use a three-wire electrical system connected to the electrical ground. For maximum protection against electric shock, use a circuit that is protected by a ground fault interrupter. Consult your electrical contractor.

WARNING! Operating a machine without observing all labels and instructional information could result in injury or damage. Read all machine labels before attempting to operate. Make sure all of the labels and instructional information are attached or fastened to the machine. Get replacement labels and decals from your authorized distributor.

WARNING! Sanding wood or varnish produces dust that could self ignite and could cause injury or damage. Dispose accordingly.

WARNING! Use of this machine as a step or furniture could result in injury or damage. DO NOT use this machine as a step or furniture. DO NOT ride on this machine.

WARNING! To avoid injury keep hands, feet and loose clothing away from all moving parts of this machine.

POWER TOOL SAFETY WARNINGS:

WARNING: Read all safety warnings and instructions. Failure to follow warnings and instructions may result in electric shock, fire and or serious injury. Save all warnings and instructions for future use. The term "power tool" in the warnings refers to your main-operated (corded) power tool.

1. Work area safety

- Keep work area clean and well lit. Cluttered or dark areas invite accidents.
- Do not operate power tools in explosive atmospheres, such as in the presence of flammable liquids, gases or dust. Power tools create sparks which may ignite the dust or fumes.
- Keep children and bystanders away while operating a power tool. Distractions can cause you to lose control.

2. Electrical safety

- Power tool plugs must match the outlet. Never modify the plug in any way. Do not use any adapter plugs with earthed (grounded) power tools. Unmodified plugs and matching outlets will reduce risk of electric shock.
- Avoid body contact with earthed or grounded surfaces, such as pipes, radiators, ranges and refrigerators. There is an increased risk of electric shock if your body is earthed or grounded.
- Do not expose power tools to rain or wet conditions. Water entering a power tool will increase the risk of electric shock.
- Do not abuse the cord. Never use the cord for carrying, pulling or unplugging the power tool. Keep cord away from heat, oil, sharp edges or moving parts. Damaged or entangled cords increase the risk of electric shock.
- When operating a power tool outdoors, use an extension cord suitable for outdoor use. Use of a cord suitable for outdoor use reduces the risk of electric shock.
- If operating a power tool in a damp location is unavoidable, use a RESIDUAL CURRENT DEVICE (RCD) protected supply. Use of an RCD reduces the risk of electric shock.

NOTE: The term "RESIDUAL CURRENT DEVICE (RCD)" may be replaced by the term "ground fault circuit interrupter (GFCI)" or "earth leakage circuit breaker (ELCB)".

- It is recommendation that the tool always be supplied via a residual current device with a rated residual current of 30mA or less.

3) Personal Safety

- Stay alert, watch what you are doing and use common sense when operating a power tool. Do not use a power tool while you are tired or under the influence of drugs, alcohol or medication. A moment of inattention while operating power tools may result in serious personal injury.

- b. **Use personal protective equipment.** Always wear eye protection. *Protective equipment such as a dust mask, non-skid safety shoes, hard hat or hearing protection used for appropriate conditions will reduce personal injuries.*
- c. **Prevent unintentional starting.** Ensure the switch is in the off-position before connecting to power source, picking up or carrying the tool. *Carrying power tools with your finger on the switch or energizing power tools that have the switch on invites accidents.*
- d. **Remove any adjusting key or wrench before turning the power tool on.** A wrench or a key left attached to a rotating part of the power tool may result in personal injury.
- e. **Do not overreach.** Keep proper footing and balance at all times. *This enables better control of the power tool in unexpected situations.*
- f. **Dress properly.** Do not wear loose clothing or jewelry. Keep your hair and clothing away from moving parts. *Loose clothes, jewelry or long hair can be caught in moving parts.*
- g. **If devices are provided for the connection of dust extraction and collection facilities, ensure these are connected and properly used.** *Use of dust collection can reduce dust-related hazards.*
- h. **Do not let familiarity gained from frequent use of tools allow you to become complacent and ignore tool safety principles.** *A careless action can cause severe injury within a fraction of a second.*

4) Power tool use and care

- a. **Do not force the power tool.** Use the correct power tool for your application. *The correct power tool will do the job better and safer at the rate for which it was designed.*
- b. **Do not use the power tool if the switch does not turn it on and off.** *Any power tool that cannot be controlled with the switch is dangerous and must be repaired.*
- c. **Disconnect the plug from the power source, before making any adjustments, changing accessories, or storing power tools.** *Such preventive safety measures reduce the risk of starting the power tool accidentally.*
- d. **Store idle power tools out of the reach of children and do not allow persons unfamiliar with the power tool or these instructions to operate the power tool.** *Power tools are dangerous in the hands of untrained users.*
- e. **Maintain power tools and accessories.** Check for misalignment or binding of moving parts, breakage of parts and any other condition that may affect the power tool's operation. If damaged, have the power tool repaired before use. *Many accidents are caused by poorly maintained power tools.*
- f. **Keep handles and grasping surfaces dry, clean and free from oil and grease.** *Slippery handles and grasping surfaces do not allow for safe handling and control of the tool in unexpected situations.*
- g. **Operating a tool that is not completely or fully assembled could result in injury or property damage.** *Do not operate this tool until it is completely assembled. Keep all fasteners tight. Keep adjustments per tool's specifications.*

5) Service

- a. **Have your power tool serviced by a qualified repair person using only identical replacement parts.** *This will ensure that the safety of the power tool is maintained.*

Safety Warnings for Sanding Operations

1. This power tool is intended to function as a sander. Read all safety warnings, instructions and specifications provided with this power tool. Failure to follow all instructions listed below may result in electric shock, fire, or personal injury.
2. Operations such as grinding, wire brushing, polishing or cutting-off, are not recommended to be performed with this power tool. Operations for which the tool was not designed may create a hazard and cause personal injury.
3. Do not convert this power tool to operate in a way which is not specifically designed and specified by the tool manufacturer. Such a conversion may result in a loss of control and cause serious personal injury.
4. Do not use accessories which are not specifically designed and recommended by the tool manufacturer. Just because the accessory can be attached to your power tool, it does not assure safe operation.
5. The rated speed of the accessory must be at least equal to the maximum speed marked on the power tool. Accessories running faster than their rated speed can break and fly apart.
6. The outside diameter and thickness of your accessory must be within the capacity rating of your power tool. Incorrectly sized accessories cannot be adequately guard or controlled.
7. Wear personal protective equipment. Depending on application, use face shield, safety goggles or safety glasses. As appropriate, wear dust mask, hearing protectors, gloves and workshop apron capable of stopping small abrasive or work piece fragments. The eye protection must be capable of stopping flying debris generated by various applications. The dust mask or respirator must be capable of filtering particles generated by the particular application. Prolonged exposure to high intensity noise may cause hearing loss.
8. Keep bystanders a safe distance away from work area. Anyone entering the work area must wear personal protective equipment. Fragments of work piece or a broken accessory may fly away and cause injury beyond immediate area of operation.
9. Position the cord clear of the spinning accessory. If you lose control, the cord may be cut or snagged and your arm or hand may be pulled into the spinning accessory.
10. Never lay the power tool down until the accessory has come to a complete stop. The spinning accessory may grab the surface and pull the power tool out of your control.
11. Do not run the power tool while carrying it at your side. Accidental contact with the spinning accessory could snag your clothing, pulling the accessory into your body.
12. Regularly clean the power tools air vents. The motor's fan will draw the dust inside the housing and excessive accumulation may cause electrical hazards.
13. Do not operate the power tool near flammable materials. Sparks could ignite these materials.
14. Do not use accessories that require liquid coolants. Using water or other liquid coolants may result in electrocution or shock.
15. Use proper sized sanding disc paper. Follow manufacturers recommendations, when selecting sanding paper. Larger sanding paper extending too far beyond the sanding pad presents a laceration hazard and may cause snagging, tearing of the disc or kickback.
16. Risk of explosion. Floor sanding can result in an explosive mixture of fine dust and air. Use floor sanding machine only in a well-ventilated area free from any flame or match.

Additional Rules For Safe Operation

1. Empty the dust collection receiver frequently. Do not leave residue in dust collection receiver unattended. Always empty in a noncombustible metal container. Sanding wood or varnish produces dust that can self ignite and cause injury or damage. Follow this precaution for storage.
2. Set all exposed nails. Sweep loose abrasive away from work area. Do not strike metal pipes, ect., with sanding paper. Striking metal or abrasive particles with sanding paper produces sparks that could ignite the sanding dust which can cause injury or damage.
3. Do not operate a partially assemble power tool. Keep all adjustments within manufacturer's specifications. Keep all fasteners tight. Operating a partially assembled power tool could result in injury to the operator or bystander and could cause damage to the equipment or surroundings.
4. Do not attempt to change the sanding paper while the power tool is running. The sanding pad can snag clothing and cause injury to limbs and moving sanding paper can cause abrasions.
5. The power tool should only be used on an electrical system (mains) that is rated for the electrical requirements of the power tool as shown on the nameplate. Use only on an earthing (grounded) system. Do not service the power tool if it is energized or connected to an electrical circuit. Improper use could cause fire or electric shock.

TECHNICAL SPECIFICATIONS:

Description	HT5 (07248A)
Voltage (V)	230
Frequency (Hz)	50
Current (A)	3.5
Disc Driver System	Belt Driven
Disc Rate	3900 rpm
Power	0.5Hp, (0,37 kW)
Abrasive	5" (125mm) diameter disc
Cord	H05VV-F 1.0 mm ²
Dust Collection	External Vacuum
Dust Control Rate	Vacuum Dependent

MACHINE COMPONENTS

- 1 ON/OFF Switch
- 2 Start Button
- 3 Power Cord Receptacle
- 4 1-1/2" Vac Connection
- 5 Operation Handles
- 6 Head Index Latch
- 7 LED Work Light
- 8 Sanding Disk
- 9 Guide Wheel
- 10 Edging Caster Attachment
- 11 Brush Holders

OPERATOR RESPONSIBILITY

The operator is responsible for performing the recommended daily maintenance and checkups of the machine to keep it in good working condition. The operator must inform the service mechanic or supervisor when recommended maintenance procedures are required as prescribed in the "MAINTENANCE" section of this manual.

FOR SAFETY: DO NOT operate machine before reading and understanding the operation manual.

Keep your machine regularly maintained by following the maintenance information in this manual. Order parts and supplies only from an Authorized HireTech Distributor. Use the parts illustration section of your manual when ordering parts.

During and after operation, perform the recommended daily and hourly procedures outlined in the Maintenance Chart.

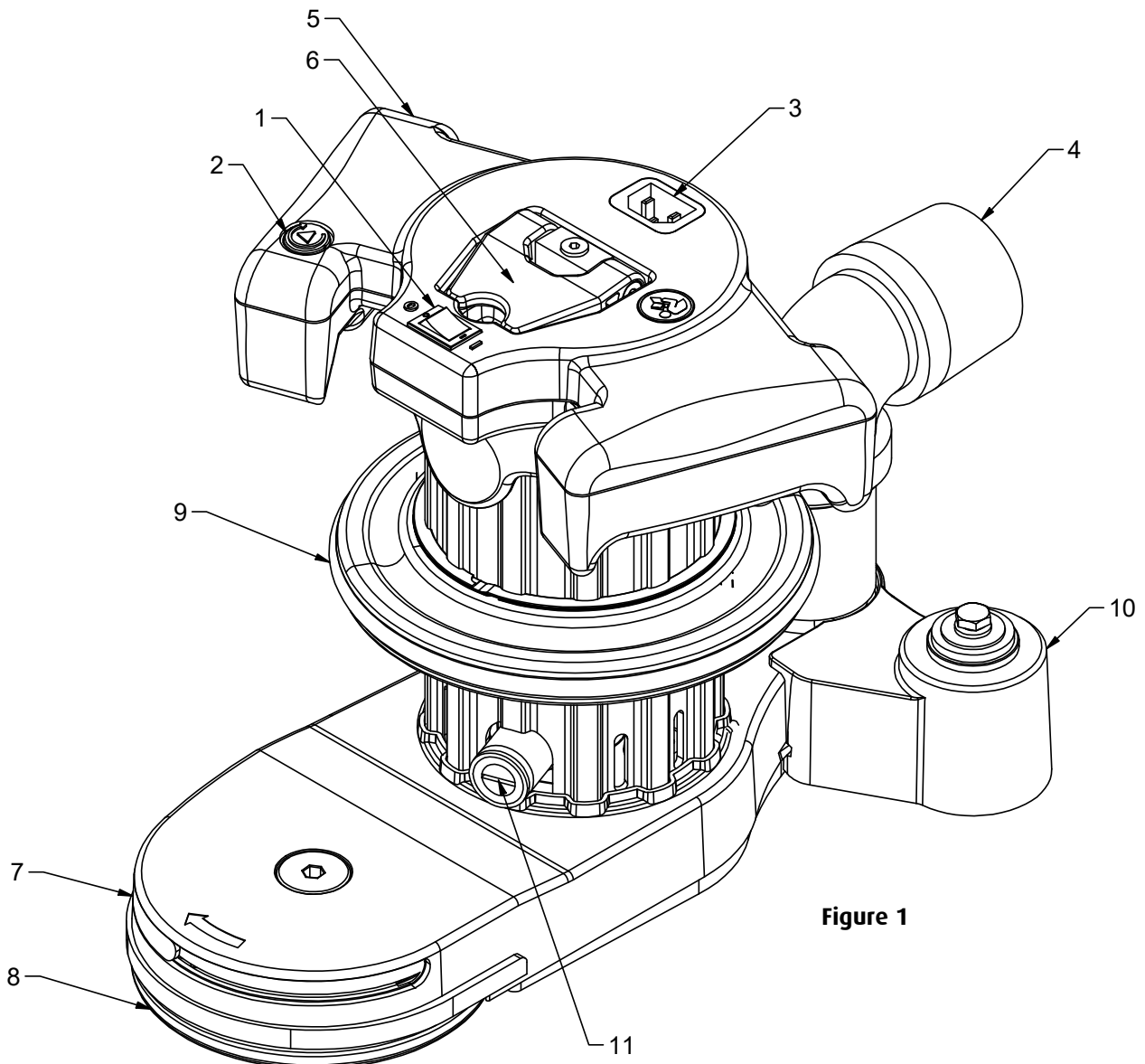


Figure 1

GROUNDING INSTRUCTIONS

WARNING: To prevent possible electric shock, protect the machine from rain. Keep the machine in a dry building.

WARNING: To prevent possible electric shock, always use a 3-wire electrical system connected to the electrical ground.

WARNING: DO NOT cut, remove or break the ground pin. If the outlet does not fit the plug, consult your electrical contractor.

WARNING: Have worn, cut or damaged cords replaced by an authorized service person.

Instructions for Connection to Power Supply (230V)

CAUTION: This machine will operate only on the AC frequency and electrical voltage shown on the nameplate. Make sure you have the correct frequency and voltage before connecting the power cord to an outlet.

This machine must be connected to the electrical ground to protect the operator from electric shock. The machine has a power cord with two main conductors and one earthing conductor. Connect the plug to the type of receptacle shown in Figure 2. The green and yellow conductor cord is the ground wire. Never connect this wire to any terminal other than the ground terminal.

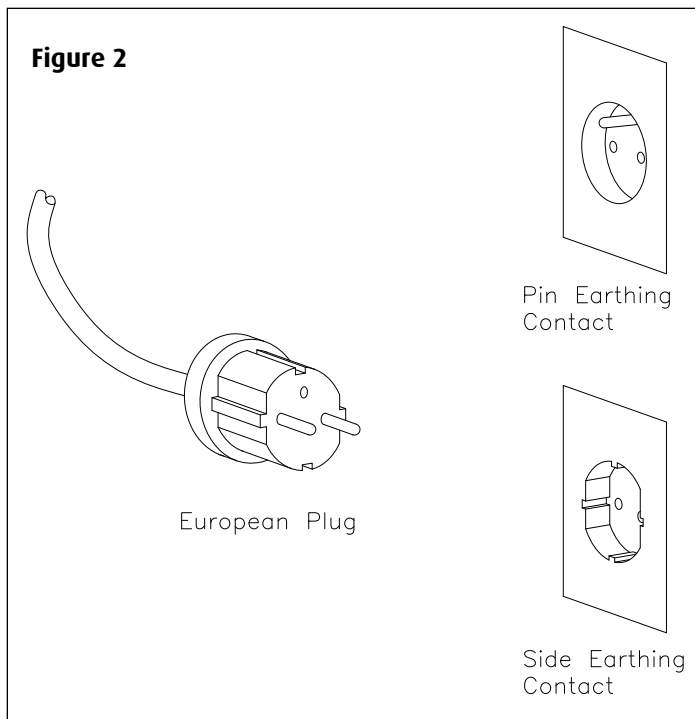
WARNING: Always use this machine with an AC three-conductor electrical system connected to the electrical ground. Replace any worn, cut, or damaged cords. Replace any damaged plugs, receptacles, or connector bodies. Do not move the machine over an electrical cord. Always lift the cord over the machine.

Extension Cords (230V)

Use only an approved extension cord with two main conductors and one earthing conductor.

WARNING: If you use an extension cord, use an extension cord with minimum wire size 1.5 mm². Do not use an extension cord longer than 15 meters. Do not join two extension cords.

WARNING: Do not cut, remove, or break the ground terminal. Do not try to fit a three-terminal plug into a receptacle or connector body that does not fit the plug. If the receptacle or connector body does not fit the plug, see your authorized service person to make the connection.



MACHINE SETUP

This sanding machine is designed to be operated with a 1-1/2" (40 mm) remote vacuum dust collection system.

Preparing Remote Vacuum Dust Collection Systems

To prepare the machine for a remote vacuum dust collection system that has a 1-1/2" (40 mm) hose end, follow this procedure:

1. Install supplied 1-1/2" (40 mm) hose swivel cuff (Figure 3) by screwing cuff CCW onto hose.
2. Push swivel cuff onto base using a twisting motion (Figure 3).

NOTE: Start the remote vacuum collection system before operation.

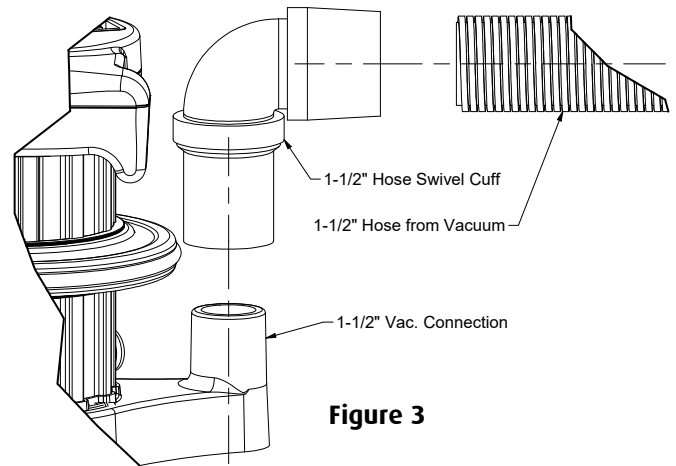


Figure 3

Preparing the Machine for Operation

1. Familiarize yourself with machine. Read all danger, warning, and caution statements in the Owner's Manual before operating this machine.
2. The machine will only accept hook and loop abrasive discs. When installing abrasive disc, take care to center disc on driver (Figure 4).
3. Edging Caster Attachment should be used for edging only.

For Stair Sanding - Remove Edging Caster Attachment with one quick backwards tap on the caster attachment (Figure 4).

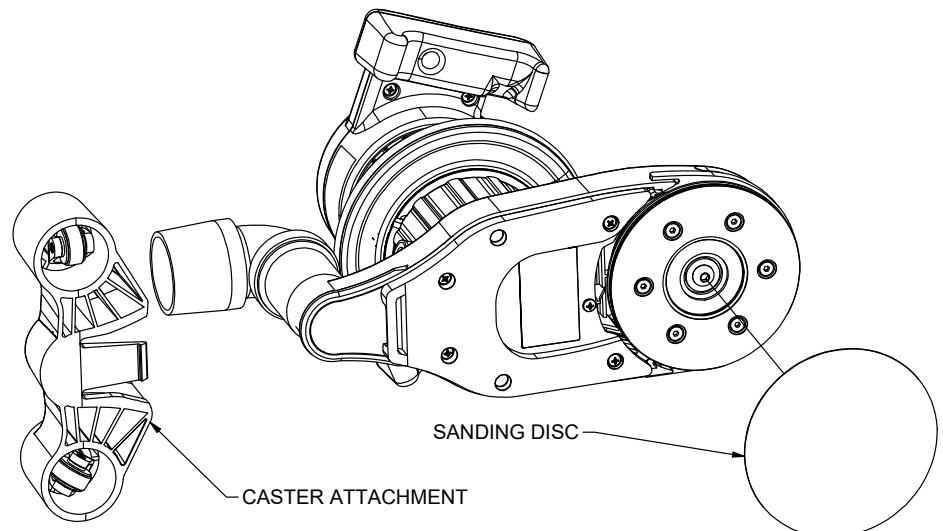


Figure 4

OPERATING INSTRUCTIONS

1. Move machine to the location of your work. Set any exposed nails with hammer and punch to avoid encounter with abrasive.
2. Adjust angle by rotating Head Index Latch upward (Figure 5). Position handle in desired location (180 Degrees total rotation).
3. Make sure the control switch is in the "OFF" position then connect the power cable to an appropriately grounded fused circuit. Connect the power cable to the Power Cord Receptacle (Figure 1).
4. With the machine in the reclined position move the ON/OFF switch to the "ON" position (Figure 1).
5. Energize the Sanding Disc by pressing and releasing the red start button.
6. Stop the machine by switching the ON/OFF Switch to OFF.
7. Gradually lower pad to surface intended for sanding. Make sure the machine is in motion while the pad is engaged with the surface to be sanded. It is advisable to not add effort to the pad as this may lead to "nosing in" or "tipping" which produces grooves or lines on the surface.
8. When replacing abrasive, emptying the contents of the dust bag, or when sanding operation is completed, return machine to reclined position, flip ON/Off switch to "OFF" then disconnect the power cable from the Power Cord Receptacle.
9. Empty remote vacuum dust bag whenever it becomes 1/3 full.

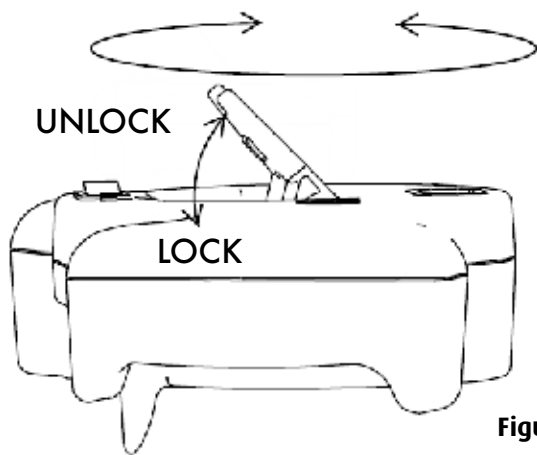


Figure 5

⚠ DANGER: Failure to disconnect the power cable from machine whenever servicing, replacing abrasive, or emptying the dust bag could result in electrocution or severe injury. Never leave machine unattended while the power cable is connected.

⚠ DANGER: Never leave dust container unattended with sanding dust in it. Sanding dust can spontaneously ignite and cause a fire or explosion. Empty dust container into a metal container, clear of any combustibles. Do not empty dust container contents into a fire. Do not overfill dust container.

ADJUSTMENT PROCEDURES

Leveling

Grasp the adjusting screw, "A", and loosen the lock nut, "B". (Figure 6).

Condition - Pad creates ridges on both edges or a "hop" is experienced: Rotate both adjusting screws equal amounts clockwise. Tighten locknuts and test on a piece of plywood. Repeat procedure until condition is corrected. We recommend you not exceed 1/8" rotation for each attempt.

Condition - Pad creates a ridge on the tip of the pad: Rotate both adjusting screws counter clockwise, tighten locknuts and test. Repeat procedure until condition is corrected. Use only 1/8 rotation for each attempt.

Condition - Pad creates a ridge on only one side of the pad: Either rotate the adjusting screw of the side effected clockwise or rotate the adjusting screw opposite counterclockwise, depending on whether the ridge terminates beyond the tip of the pad or prior to it. If it is prior to the tip, adjust the side affected, otherwise adjust the opposite side.

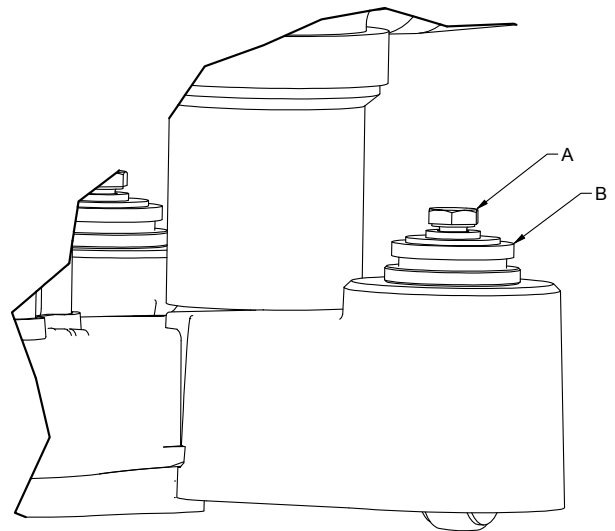


Figure 6

ROUTINE MAINTENANCE

⚠ CAUTION: Failure to perform maintenance at recommended intervals may void warranty.

Carbon Brushes

Have the carbon brushes replaced at least every 500 hours and more frequently under heavy use.

Bearings

To insure reliable performance, have pad driver bearings inspected for wear or damage after every 1500 hours. If used heavily, have the bearings replaced seasonally.

Belt

The belt should be inspected every 500 hours. Replace if there are cracks or signs of wear.

⚠ CAUTION: Maintenance and repairs performed by unauthorized personnel could result in damage or injury. Maintenance and repairs performed by unauthorized personnel will void your warranty. Failure to perform maintenance at recommended intervals may void warranty.

MAINTENANCE

Carbon Brushes

Inspect both brushes every 6 months or 250 hours. Access to the brushes is gained through the front and back brush caps (figure 7).

Turn cap CCW using a flat screw driver until cap is free of housing. If any brush has worn to 3/8" (9,4 mm) in length or shorter, replace the entire set.

⚠ CAUTION: Use only motor brush PN AS098400 or motor failure will occur.

When replacing the brushes, make sure the machine is unplugged from power source, the brush seats against the commutator, the spring rests in the recess of the brush holder, and the brush is free to travel. When returning the Brush Cap, keep any wires clear of the commutator and any pinch site.

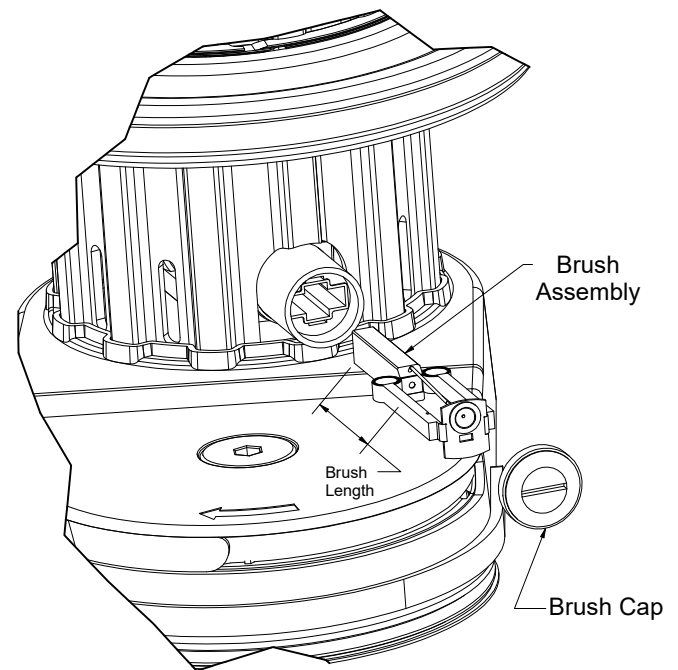
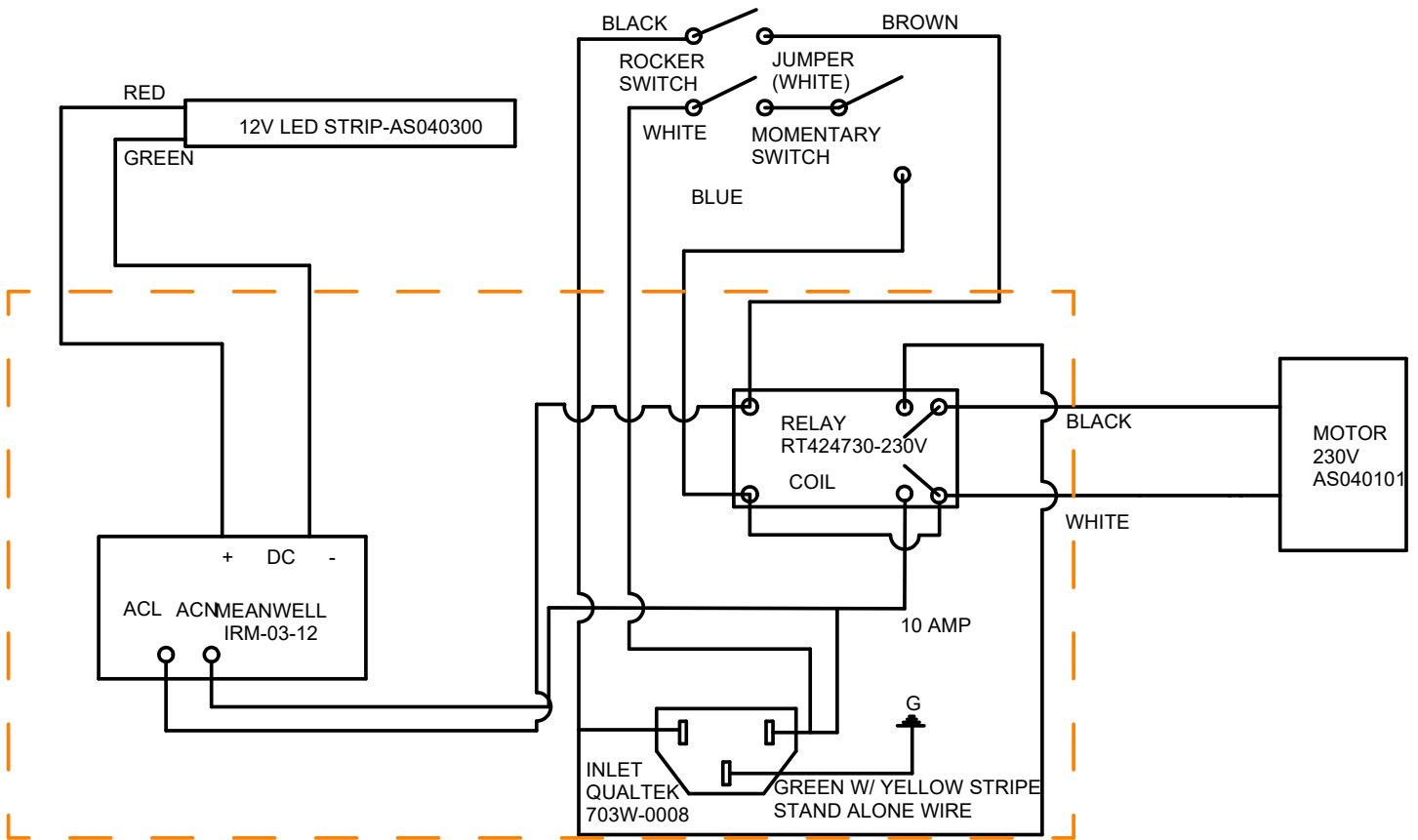


Figure 7

TROUBLESHOOTING

PROBLEM	POSSIBLE CAUSE	SOLUTION
Machine will not start	No power	Check the main power supply (building circuit breaker).
		Check the cord connection at the wall outlet.
	ON / OFF switch not ON	Turn ON switch.
	Start button not depressed	Start button must be pressed to start machine.
	Cord not seated in handle	Make sure cord is locked into handle.
	Failed component	Contact an authorized HireTech Distributor.
Motor runs sluggish	Low voltage	Using extension cord with wire smaller than 1.5 mm. Replace with a 1.5 mm extension cord.
		Using more than one extension cord. Only use one 15m 1.5 mm extension cord.
	Worn motor brushes	Replace motor brushes.
Poor dust collection	No vacuum connected to machine	Connect properly sized vacuum dust collection system to machine.
	Obstruction in machine	Remove bottom plate and remove obstruction.
Sanding disc not cutting properly	Casters not aligned properly	Adjust casters per "Adjust Procedures" in the manual.
	Slide plate worn or damaged	Replace slide plate.

ELECTRICAL SCHEMATIC - 230V

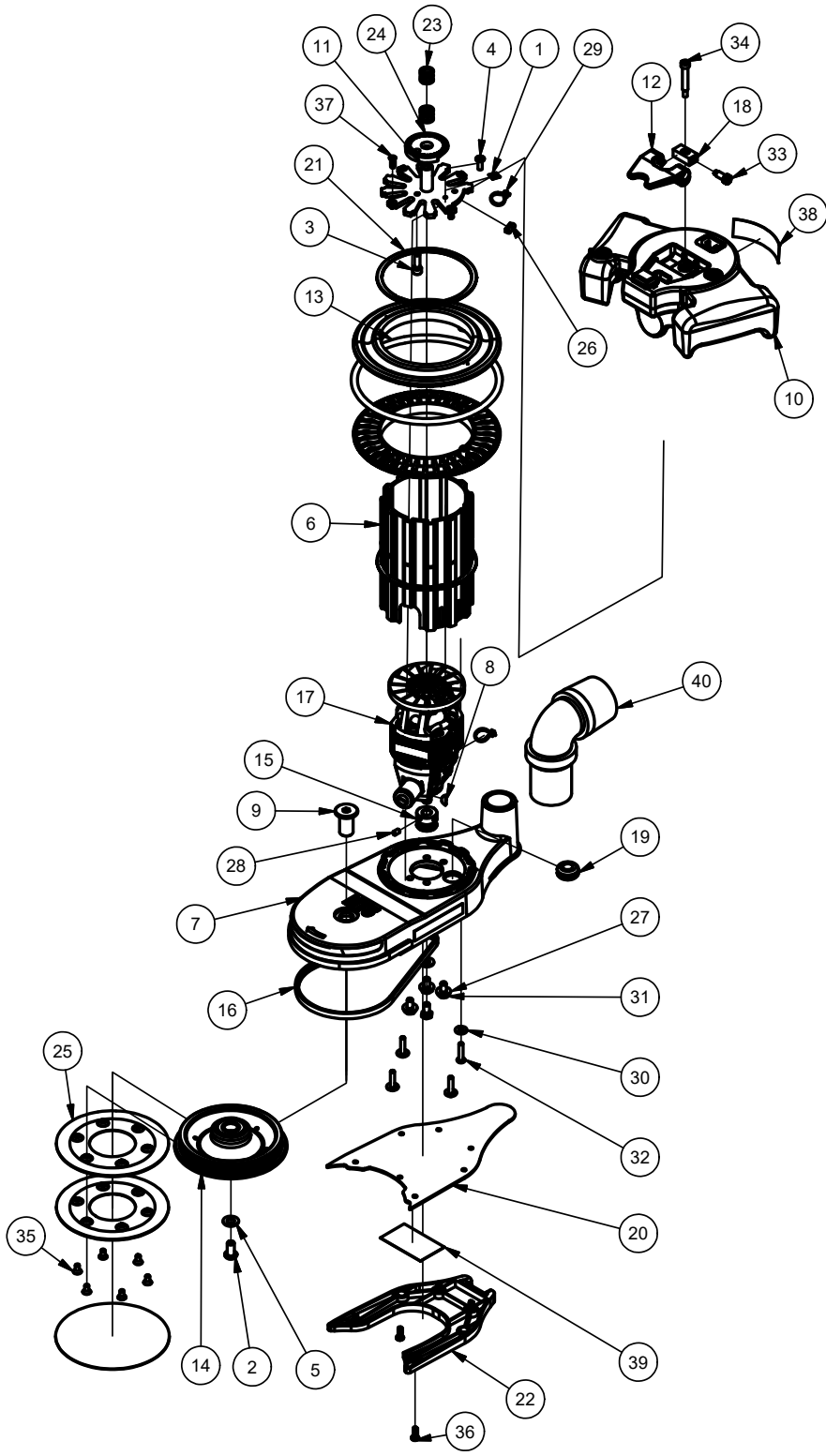


230V-50Hz

RF084901

032224

BASE ASSEMBLY



RF079803

041124

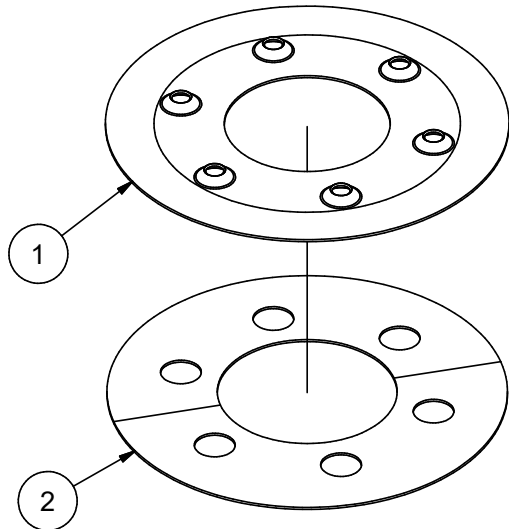
BASE ASSEMBLY (CONTINUED)

Parts List			
ITEM	QTY	PART NUMBER	DESCRIPTION
1	1	77094A	LABEL, GROUND SYMBOL
2	1	87701A	5/16 - 18 x 5/8, BHCS
3	1	962289	SCREW, 1/4-20 X 3/4 SOCKET HD
4	1	962798	SCREW, 10-24 X 1/2 P.H.
5	1	980651	WASHER 5/16 SAE FLAT
6	1	AS038003	COVER, MOTOR, GREEN PC
7	1	AS038111	ASSY. BASE, HT5
8	1	AS038200	KEY, WOODRUFF, #304
9	1	AS038600	SHAFT, DRIVEN, STAIR SANDER
10	1	AS038804	ASSY, HT5 HANDLE, 230V
11	1	AS039000	WLDMT, PLATE, HANDLE ADAPTOR
12	1	AS039100	HANDLE, RELEASE
13	1	AS039300	TREAD, GUIDE, WHEEL
14	1	AS039400	PULLEY, ASSEM, 5" HT5
15	1	AS039700	PULLEY, POLY V DRIVE, .9"
16	1	AS039800	BELT, POLY-V, 3 PJ 486 SJ139T
17	1	AS040101	MOTOR, 230VAC, X10187-51
18	1	AS040600	BLOCK, PIVOT, STAIR SANDER
19	1	AS040900	GROMMET, 1/2 ID HEYCO G1153
20	1	AS041000	COVER, STAIR SANDER
21	2	AS041700	RING, RETAINING, 4.06 SHAFT
22	1	AS059600	PLATE, HT5 SLIDE
23	2	AS090100	SPRING, COMP. .5L, .6OD, .045W
24	1	AS091200	CLUTCH, INDEX HT5
25	2	AS092000	ASSY, 5" SANDING DRIVER
26	0.50 in	AS111300	EDGING, WEAR
27	4	NB3350	WASHER, FLAT, 1/4", CZ
28	2	NB005200	SCREW, SET, 10-24 X 5/16, NYLON TIP
29	2	NB6035	TIE, NYLON, 1/8" X 4", BLK
30	4	NB9645	WASHER, FLAT, #10
31	4	NB015700	SCREW, CAP, HH, 1/4 -20 X 5/8
32	4	NB033300	SCREW, BH, 10-24 X 7/8
33	2	NB075200	1/4X1/2X#10-24 SHORT-THREAD SS
34	1	NB080700	SCREW SH 1/4 X 1-1/4 X 10-24
35	6	NB080800	SCR 10-24X 3/8 SF ST CAP
36	5	NB082500	SCREW, 8-32 X 1/2 PAN, TORX, T20
37	4	NB082600	SCREW, 8-32 X 1/2 FLAT, TORX, T15
38	1	SN014804	LABEL, 07235A HT5
39	1	SN017800	DECAL, SERIAL, UKCA-CE-AU
40	1	AS042700	CUFF, 1-1/2", SWIVEL

PAD DRIVER & PULLEY ASSEMBLY

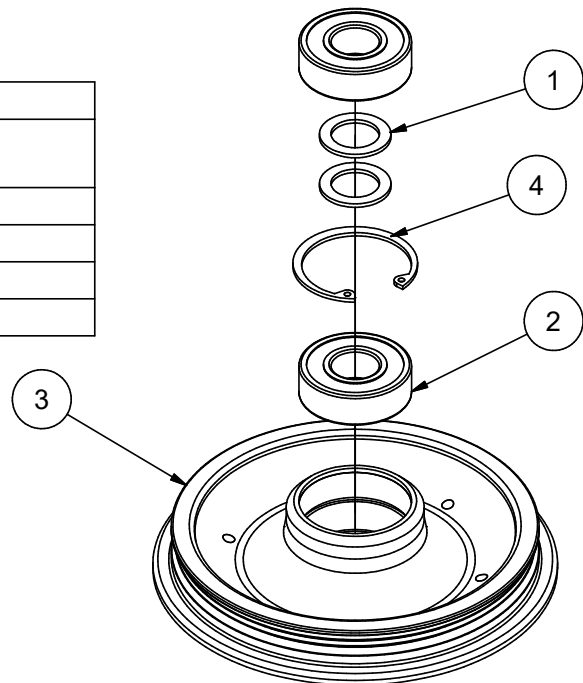
PAD DRIVER ASSEMBLY

AS092000 DRIVER ASSEMBLY			
ITEM	QTY	PART NUMBER	DESCRIPTION
1	1	AS089800	DISC, METAL, 5" SANDING
2	1	AS112000	HOOK, 5", #745, 5909 ADHESIVE



PULLEY ASSEMBLY

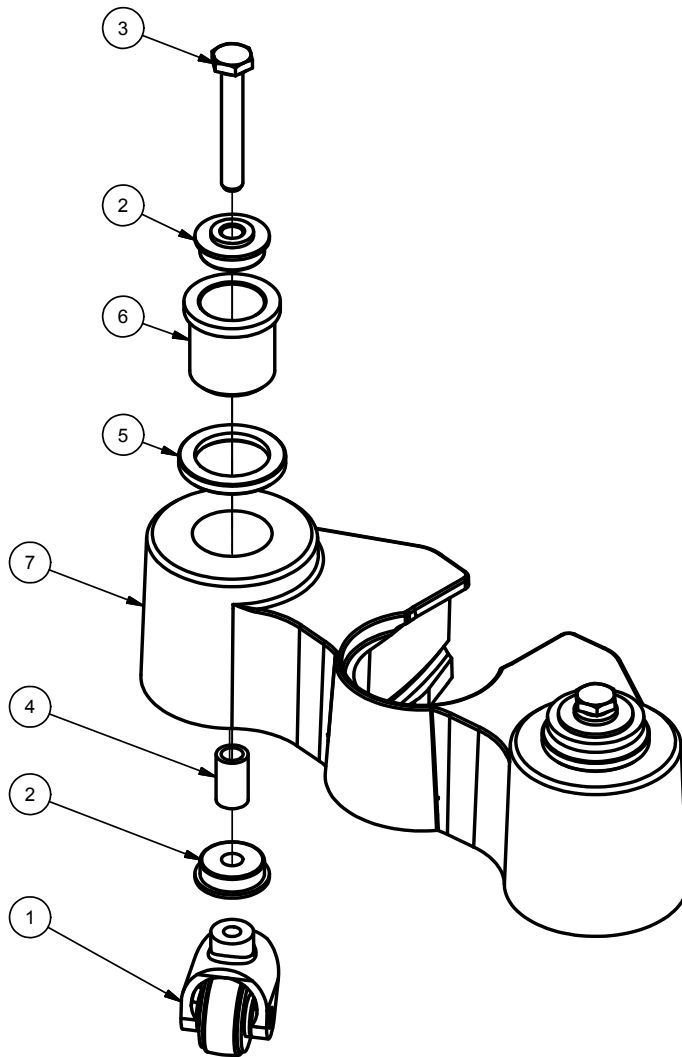
AS039400 PULLEY ASSEMBLY			
ITEM	QTY	PART NUMBER	DESCRIPTION
1	2	61355A	SPACER
2	2	902567	BEARING BALL 6202-2Z
3	1	AS039500	PULLEY, 5" SANDING
4	1	NB076000	RING, INT., 35mm



RF080300

2/17/23

CASTER ASSEMBLY



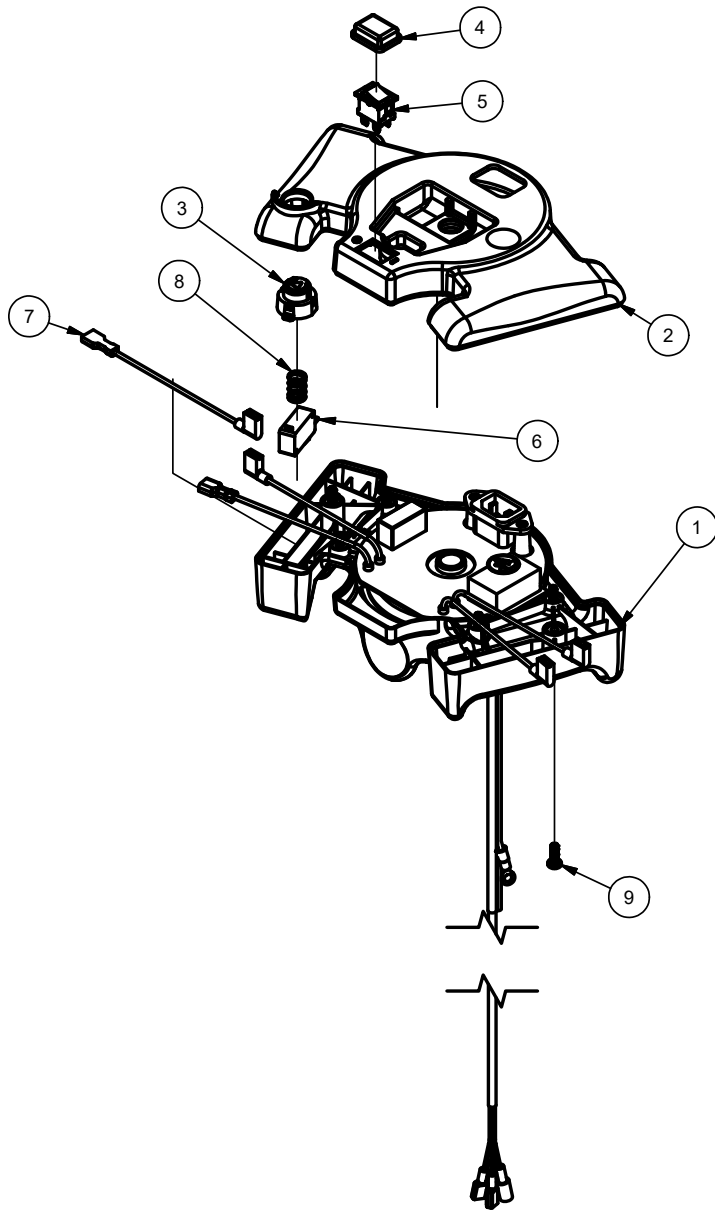
Parts List			
ITEM	QTY	PART NUMBER	DESCRIPTION
1	2	10212A	WHEEL & YOKE ASM.
2	4	50740A	BEARING, BALL, 1/4 X 3/4, SHIELD
3	2	85702A	SCR 1/4-20 X 1 3/4 HX ST CAP
4	2	298215	COLLAR, SPACING
5	2	920670	NUT, LOCK, ADJUST
6	2	960130	SCREW, SWIVEL, CASTER
7	1	AS087500	BRACKET, CASTER

RF080400

12/19/22

HANDLE ASSEMBLY

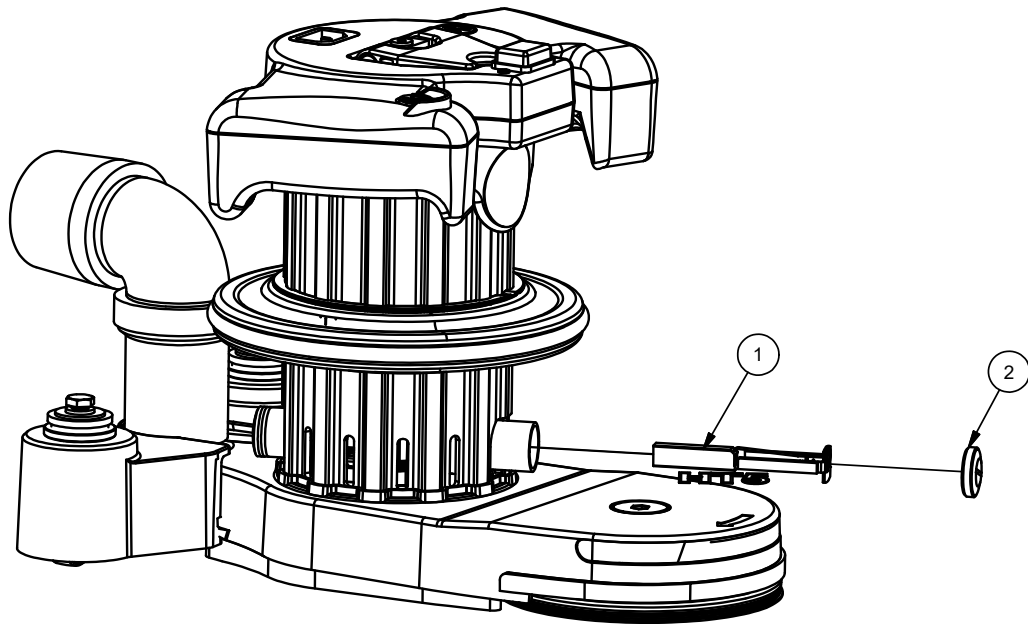
Parts List			
ITEM	QTY	PART NUMBER	DESCRIPTION
1	1	AS038803	ASSY, HT5 LOWER HANDLE, 230V
2	1	AS087202	ASSY. HANDLE, HT5, UPPER
3	1	AS087400	BUTTON, HT5 MOMENTARY SWITCH
4	1	AS088300	COVER, SWITCH
5	1	AS090000	SWITCH, ROCKER, DPST
6	1	AS090300	SWITCH, MICRO, V7-1C27E9
7	1	AS094400	ASSY, JUMPER WIRE, HT5
8	1	AS110000	SPRING, COMP. .63L, .42OD
9	6	NB082500	SCREW, 8-32 X 1/2 PAN, TORX, T20



RF079810

042924

CARBON BRUSH ASSEMBLY



Parts List

ITEM	QTY	PART NUMBER	DESCRIPTION
1	1	AS098400	BRUSH, CARBON, HT5 MOTOR
2	2	AS098500	CAP, HT5 MOTOR BRUSH

RF088110

041124

Limited Warranty HT5 Edger

HireTech warrants to the original purchaser that the HireTech machine covered by this warranty is free from defects in workmanship and materials. Should any part fail in the period of one year from the date of the original purchase as a result of a defect, HireTech will (at its option) either repair or replace the part without charge provided that the machine has been operated in accordance with the Owners Manual and Operating Instructions.

Should any such defect arise, please contact your nearest authorised repair agent. Standard service over land mainland freight costs will be refunded on warranty repairs at the sole discretion of Hiretech or the authorised repair agent. If the repair is non-warranty, the customer will be advised before any work is undertaken.

This warranty is the sole warranty by HireTech and is in lieu of all other warranties express or implied and releases HireTech from all other obligations and liabilities.

This warranty does not apply to normal wear and tear to the machine, and in particular does not cover normal wear parts such as mains cable, wheels, switches, relays, brushes, rubber parts, hoses and bearings. This warranty also does not cover, and HireTech will not be liable for, excessive wear caused by abnormal use.

HireTech will under no circumstances be liable for alterations to the machine or for damage caused by third persons, or for misuse or abuse of the machine, or damage caused during transportation. Repairs of the machine made or attempted by persons other than those specifically authorised by HireTech shall render this warranty void and HireTech will not be liable for such repairs, the cost of such repairs, or the consequences of such repairs. Where spare parts are used on the machine and they do not conform to HireTech specifications, this warranty will be rendered void and HireTech will not be liable.

HireTech will not be liable for any indirect or consequential loss, damage, cost or expense of any kind whatever and however caused whether arising under contract, tort (including negligence) or otherwise including (without limitation) loss of production, loss of profits or contracts or of operating time or goodwill or anticipated savings.

HireTech reserves the right to change its warranty policy without notice.

Copyright 2024 HireTech



Hire Technicians Group, LTD

Unit A&B, 18 Caxton Way
Watford Business Park, Watford, Hertfordshire
England, WD18 8UA

www.hiretech.biz
Tel: +44 (0) 1923 332424
Fax: +44 (0) 1923 332425
Email: sales@hiretech.biz

Machinery Directive 2006/42/EC
ROHS Directive 2011/65/EU
EMC Directive 2014/30/EU
Harmonized Standards Applied: EN ISO 12100:2010, EN 60335-2-67:2012